

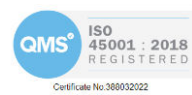
# BestConnect+

## Robust Modular System Conveyors

Data Sheet:

**Straight Driven Modules – BestConnect+**

Applicable Models: BLSM+ / BLSS+



**BESTCONNECT**

**BESTFLEX**

**POWERFLEX**

**SVLOADER**

**MAXXREACH**

## BestConnect+

### Product Description

The BestConnect+ system is purpose built for today's warehousing environment.

The robust structure gives a performance edge to the product and its fast deployment features mean installation time sees a dramatic reduction compared to industry norms. The powerful and variable motors provide drive for any operational requirements – able to be scaled to conform directly to the task in hand.

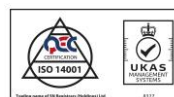
The BestConnect+ modules are also interchangeable with the other Duravant catalogue products - often combining belt conveyors and task specific products to create the perfect solution.



### Technical Data

#### Structural Data

Module Length	6000mm, 3000mm, 1000mm nominal – Others available on request
Effective Width	900mm, 1000mm, 1200mm nominal – Others available on request
Roller Pitch	60mm or 55mm nominal – Others available on request
Module Height (TOR)	750mm to 890mm adjustable height – Others available on request
Incline/ Decline	Max. 2° - Greater can be achieved on request
Side Plates	Laser cut folded steel
Legs	BestConnect+ Modular Telescopic legs.
Castors/ Feet	Levelling Feet with fine adjustment
Physical Connection	BestConnect+ Slim Splice Plates



**BESTCONNECT**

**BESTFLEX**

**POWERFLEX**

**SVLOADER**

**MAXXREACH**

## BestConnect+

### Roller/ Drive Data

Roller	Ø50mm Z/P steel tube, Precision bearings, Ø12mm Z/P axles with M8 female thread
Drives	24v Drive Rollers or SEW Euro-Drive AC – Specification is situation dependent.
Drive Method	2PJ Industrial Poly-V Belts (2 & 3 rib) – Poly-cord alternatives available on request
Torque Transmission	Roller to roller
Variable Speed	5 to 90 m/min - Specification is situation dependent.
Forward/ Reverse	Both are available – Centralised and decentralised control options.
Load Capacity	75kg / linear meter
Flow Control	Various options available on request – see Performance Options

### Electrical Data

Power Supply	24Vdc or 400v Full System Integration
Conveyor Connections	24Vdc Nominal - Options available on request.
Isolation	Localised onboard LOTO Isolator (Modular) or Full System Integration
Start/ Stop Control	Specification is situation dependent.
Emergency Stops	Specification is situation dependent.
Drive Controls	Specification is situation dependent.
System Integration	Various centralised and decentralised options available on request

### Efficiency Data

Noise	0 to 70dB(a)
Motor Rating	Specification is situation dependent.
Max. Amperage	Specification is situation dependent.
Sleep Modes	Options available on request
Efficiency Flow Control	Various options available on request – see Performance Options
Operating Temperature	+5°C - +40°C
Humidity	70% Maximum

## Product Principles

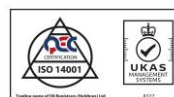
The BestConnect+ system is a purpose-built modular roller conveyor platform. Combining robust FMH foundations with updated technology, the BC+ system can be tailored and scaled to meet any industry requirements.

The powerful, variable, and customisable drives ensure smooth material handling, and the NEW frame design allows for seamless interactions with the m06 belted portfolio. Enhanced roller drive transmission now also opens the door for much higher speeds and significantly increased handling capacity.

The BestConnect+ platform's increase in performance has led to the solution having multiple options for guarding too. Fully integrated finger guards, roller to roller guards, and interlocking gated sections can all be implemented to make BestConnect+ a safe and reliable system. The equipment can also come equipped with either Poly-cord or Poly-V drive methods to allow for system variations and transportation types.

For more information and a visual demonstration of the BestConnect product, please see the below video link.

<https://youtu.be/5286Ri5mNLo>



**BESTCONNECT**

**BESTFLEX**

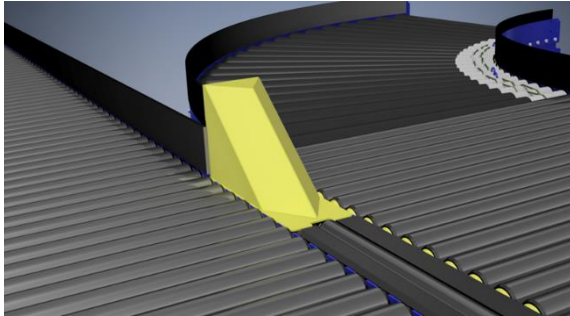
**POWERFLEX**

**SVLOADER**

**MAXXREACH**

## BestConnect+

### Performance Options



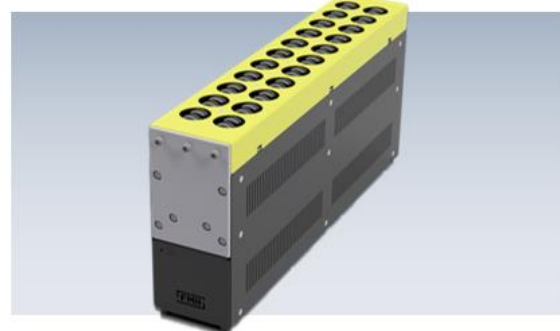
#### Side Guides

Preventing the transported goods from running off the edges of the modules. Various height options and product flow assist devices are available on request.

#### Optical Electronic Flow Control

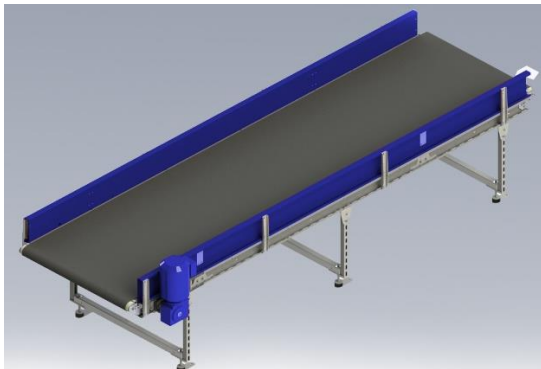
Incorporates photo electronics to provide automated flow control giving the user improved ergonomics, reduced labour cost, and improved service life. With options of using diffuse scan, retro-reflective or through-beam sensors all product shapes and materials can be detected and controlled easily.

- **Zero Pressure Accumulation** – Provides a zoned flow control only allowing each package to proceed when the downstream zone is empty. The addition of 'time out' control gives excellent power saving only driving the conveyor as required.
- **Electronic Package Stop** – The conveyor stops when sensors at the end detect a package. This stops delicate packages from being driven into a fixed end and provides power saving control.
- **Indexing** – The leading edge of a package is detected and starts the conveyor which runs until the trailing edge is detected plus a pre-set time delay. The conveyor can be utilised as an end of line storage buffer.



#### SDU – Swivel Divert Unit

The FMH Swivel Divert Unit is a high-speed material handling diverter used for automatically manipulating the direction of transported goods. For more information on this system option, please get in touch with the Sales Office.



#### Integrated Equipment

The BestConnect+ platform lends itself incredibly well to the additions of other operational equipment. Weigh Scales, Ball Tables and Manual Sortation (OMNI) Tables can all be easily connected into a BestConnect+ system. Belt Conveyor options can also be integrated through our Group Partners - should the operation require that feature. For information on all integrated equipment options, please get in touch with the Sales Office.



#### Walkover Steps/ Access

To provide regular operations or emergency access over any style of BestConnect+ system, FMH offer a variety of Stepover solutions that can enhance a systems efficiency. The 1200mm wide stairwell gives capacity for 2-way traffic whilst the upgraded handrail gives zero gaps or snags. All options and styles available on request.

