



C O N V E Y O R S

A DURAVANT COMPANY

CURVED BELT CONVEYORS



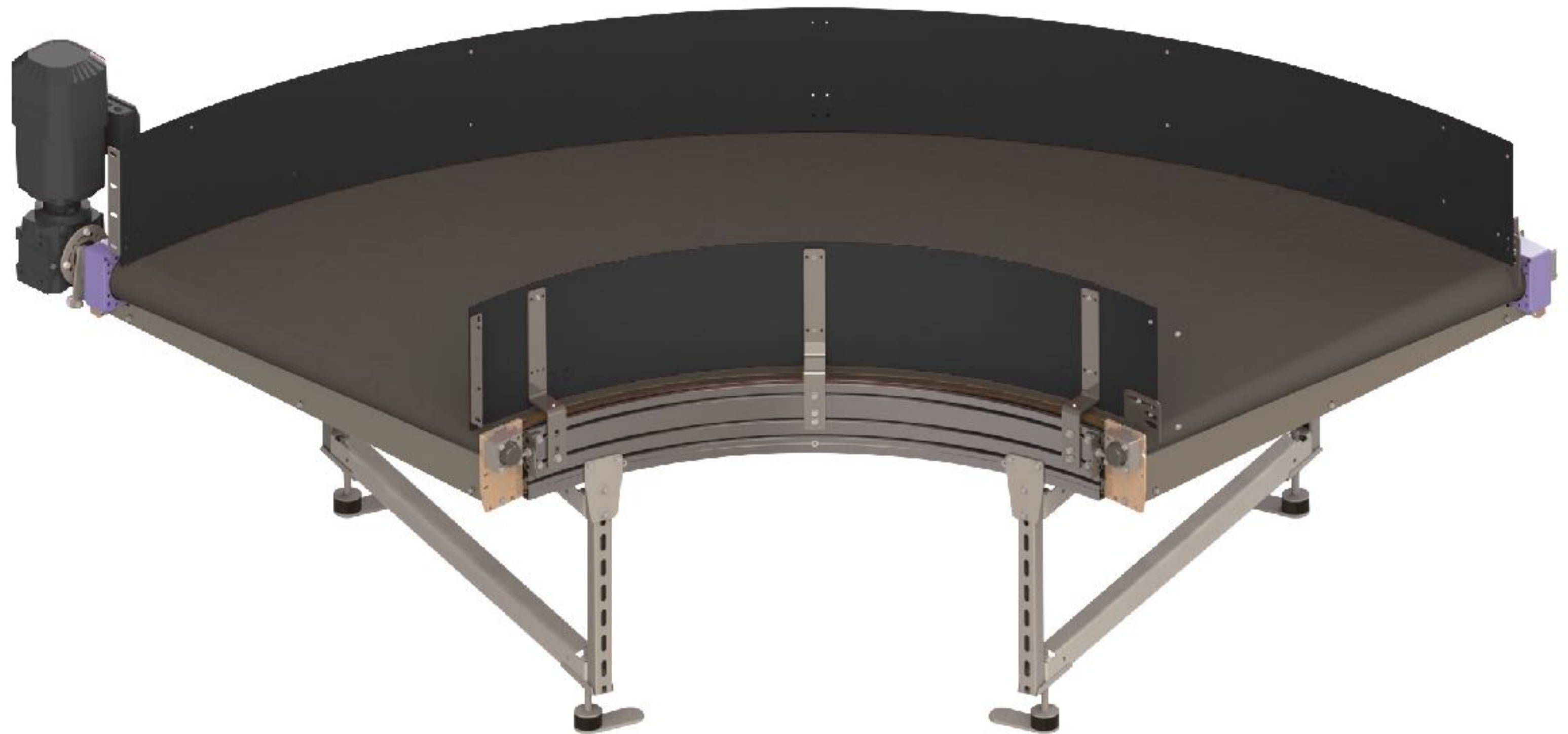
POWERED BY

motion06

A DURAVANT COMPANY

CURVED BELT CONVEYOR (CBC)

- Built to transport heavy-duty loads and convey at speeds of up to 550 feet per minute.
- Modular designs ranging from 30° to 90° angles
- Wide range of standard measurements or customer-specific measurements for integration into new or existing systems.
- High reliability, virtually maintenance-free



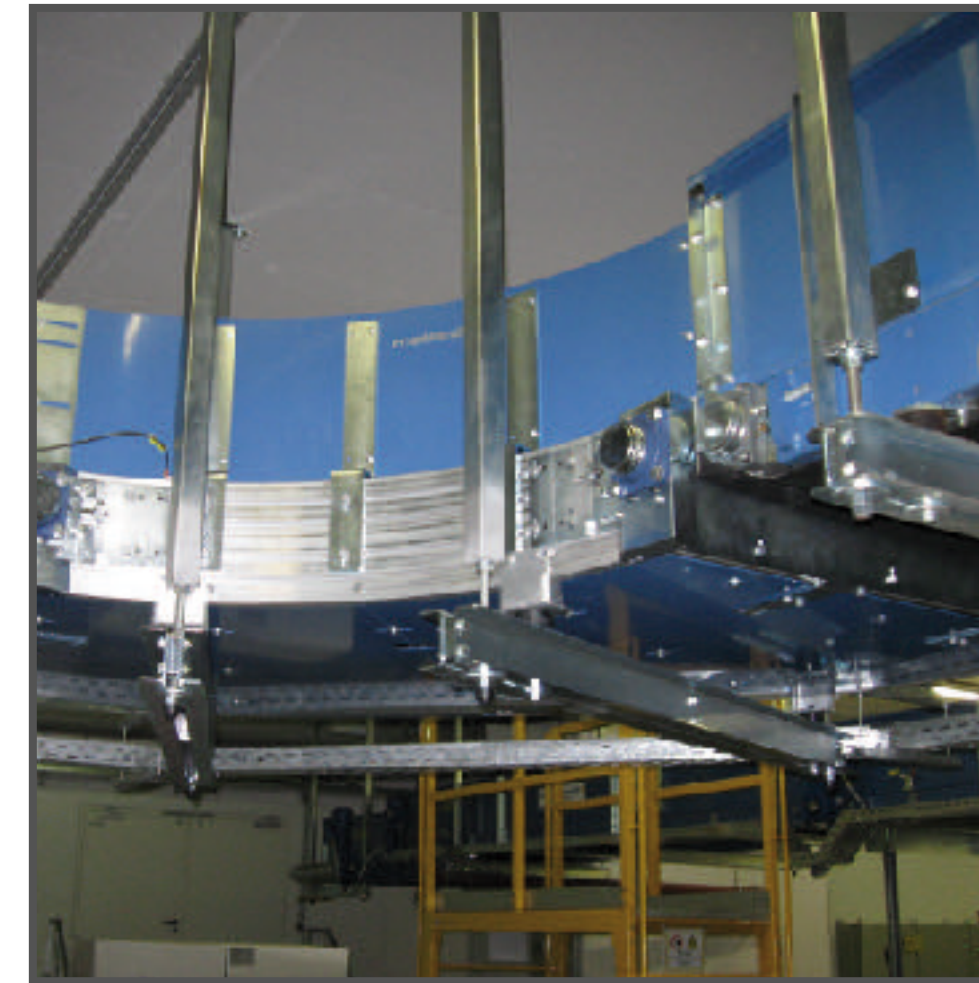
CBC | APPLICATIONS



AIRPORTS



E-COMMERCE

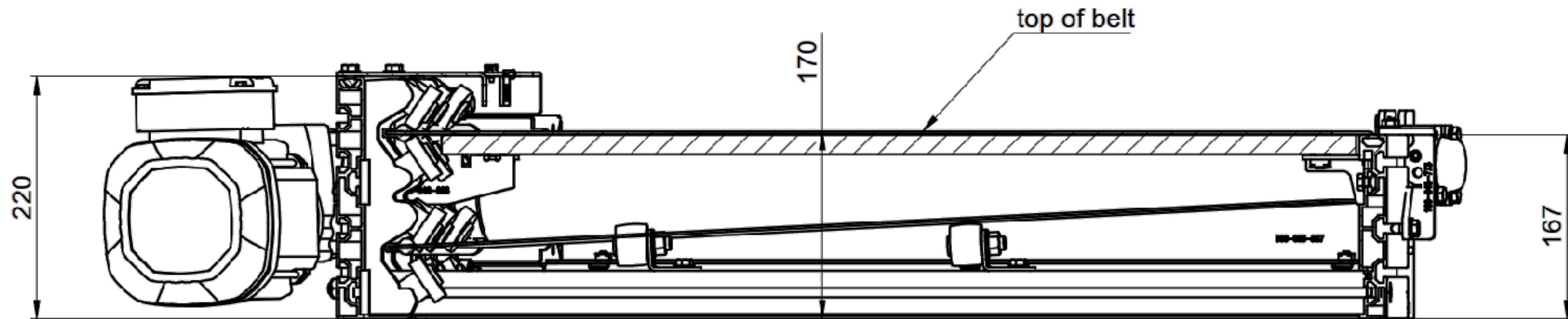


**MATERIAL
HANDLING**

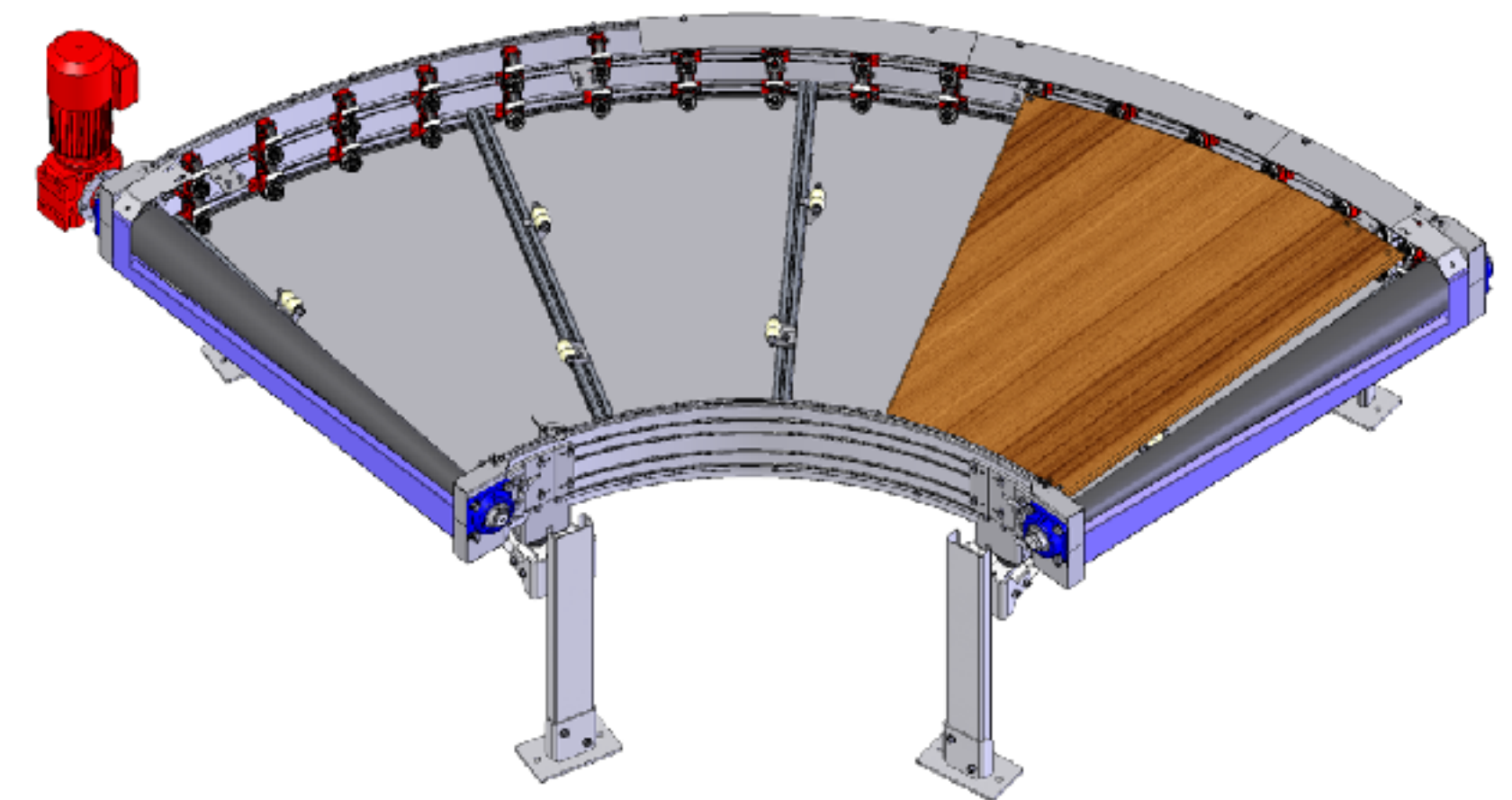


PARCEL

CBC | DESIGN

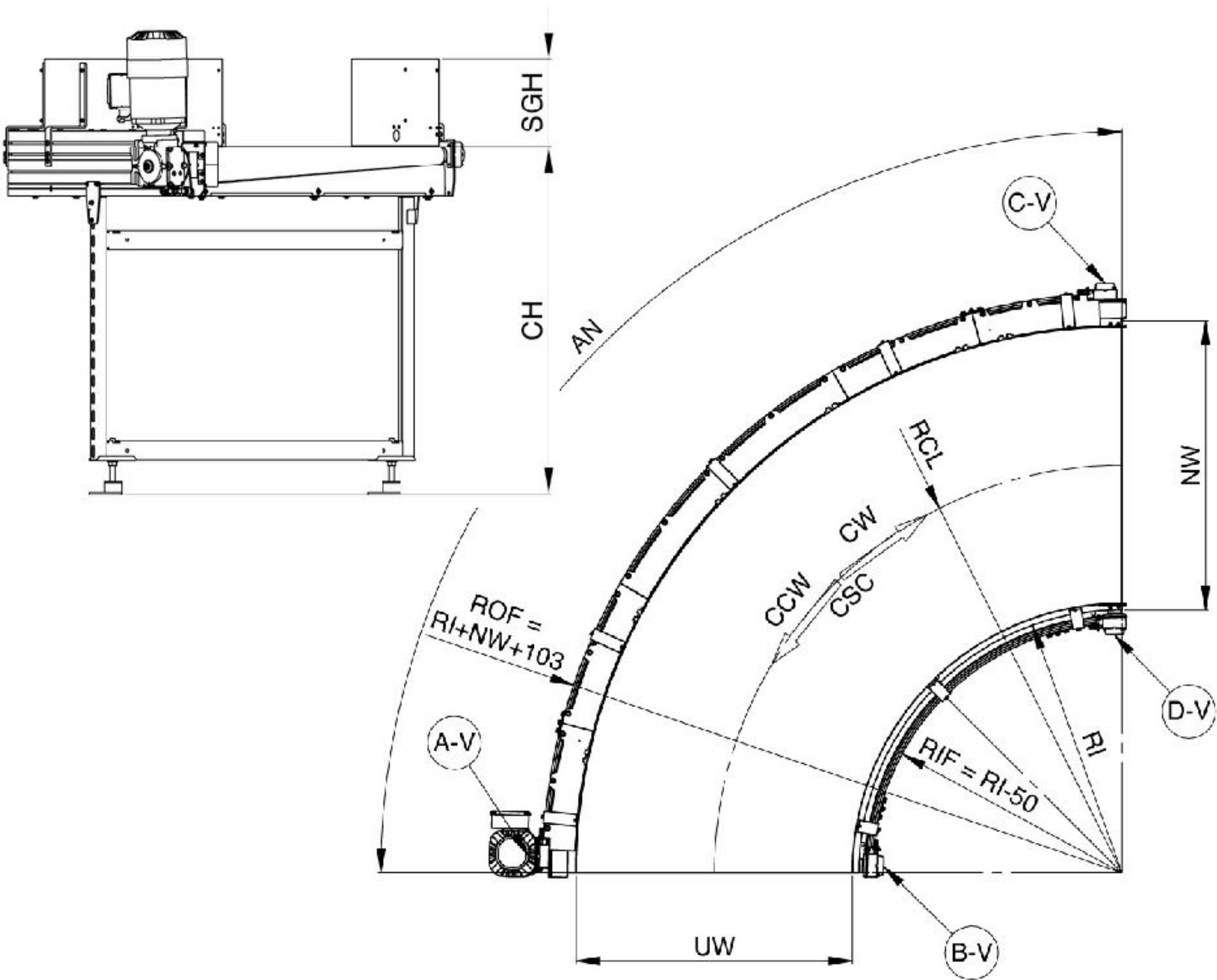


- Modular & standardized bolted design and construction
- Curved framework that features self-supporting design
- Multi-functional aluminum structure
- Variable mounting options for supports, light barriers and side guides



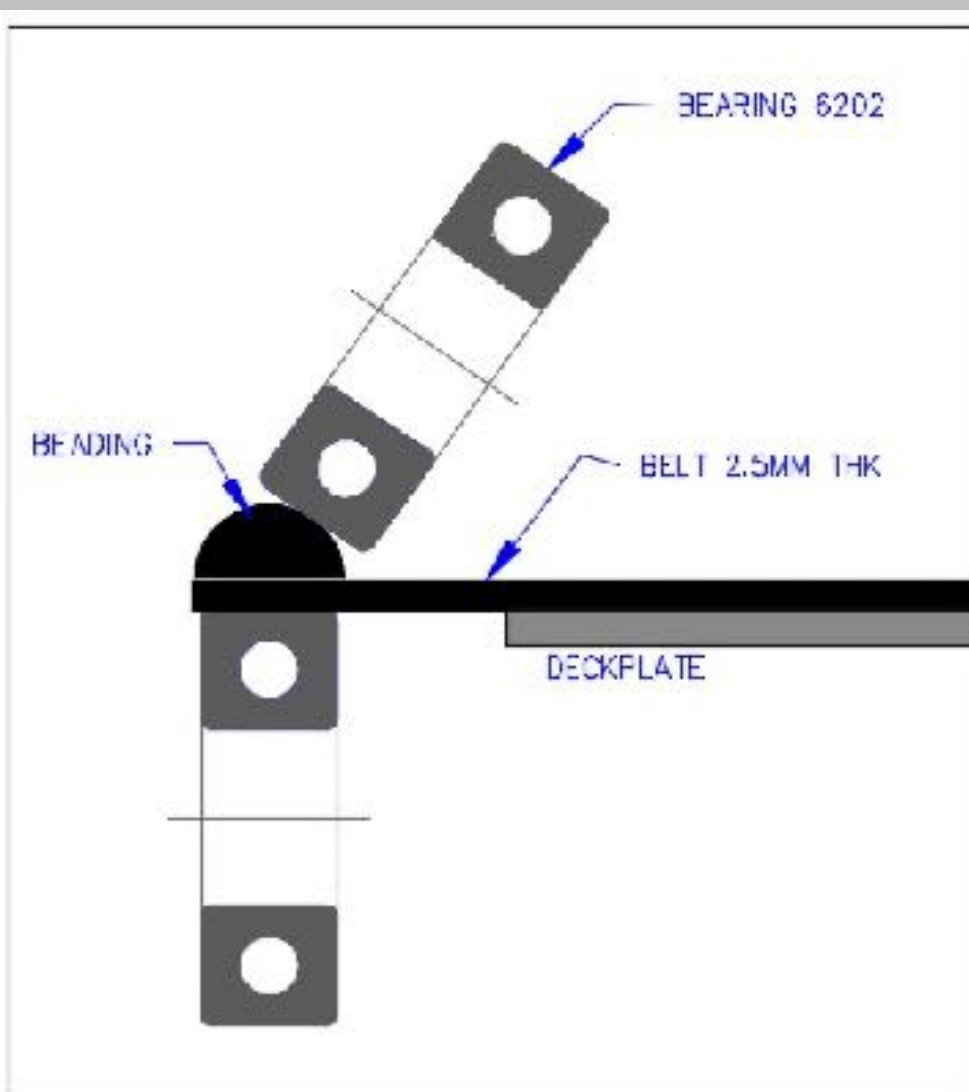
| DIMENSIONS | |
|------------|---------------------------|
| RI | Radius Inside Belt [mm] |
| NW | Nominal Width [mm] |
| AN | Angle Nominal [°] |
| RCL | Radius Centerline [mm] |
| CH | Conveying Height [mm] |
| SGH | Side Guide Height [mm] |
| UW | Usable Width [mm] |
| ROF | Radius Outside Frame [mm] |
| RIF | Radius Inside Frame [mm] |
| CSC | Conveyor Speed Centerline |
| CCW | Counter Clockwise |
| CW | Clockwise |

| DRIVE POSITIONS | |
|-----------------|-------------------------------------|
| A-V / H | Left Outside Vertical / Horizontal |
| B-V | Left Inside Vertical |
| C-V / H | Right Outside Vertical / Horizontal |
| D-V | Right Inside Vertical |

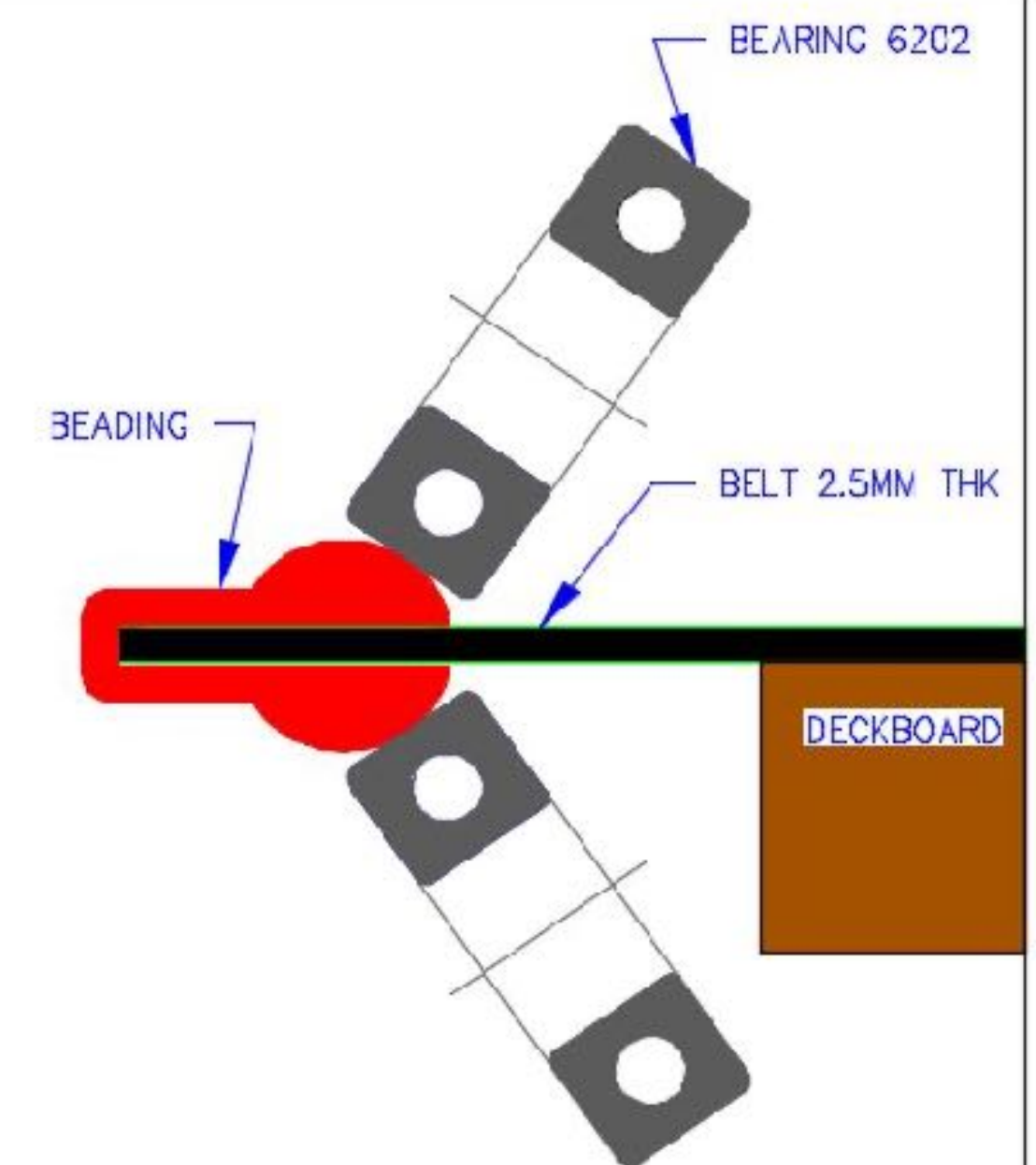
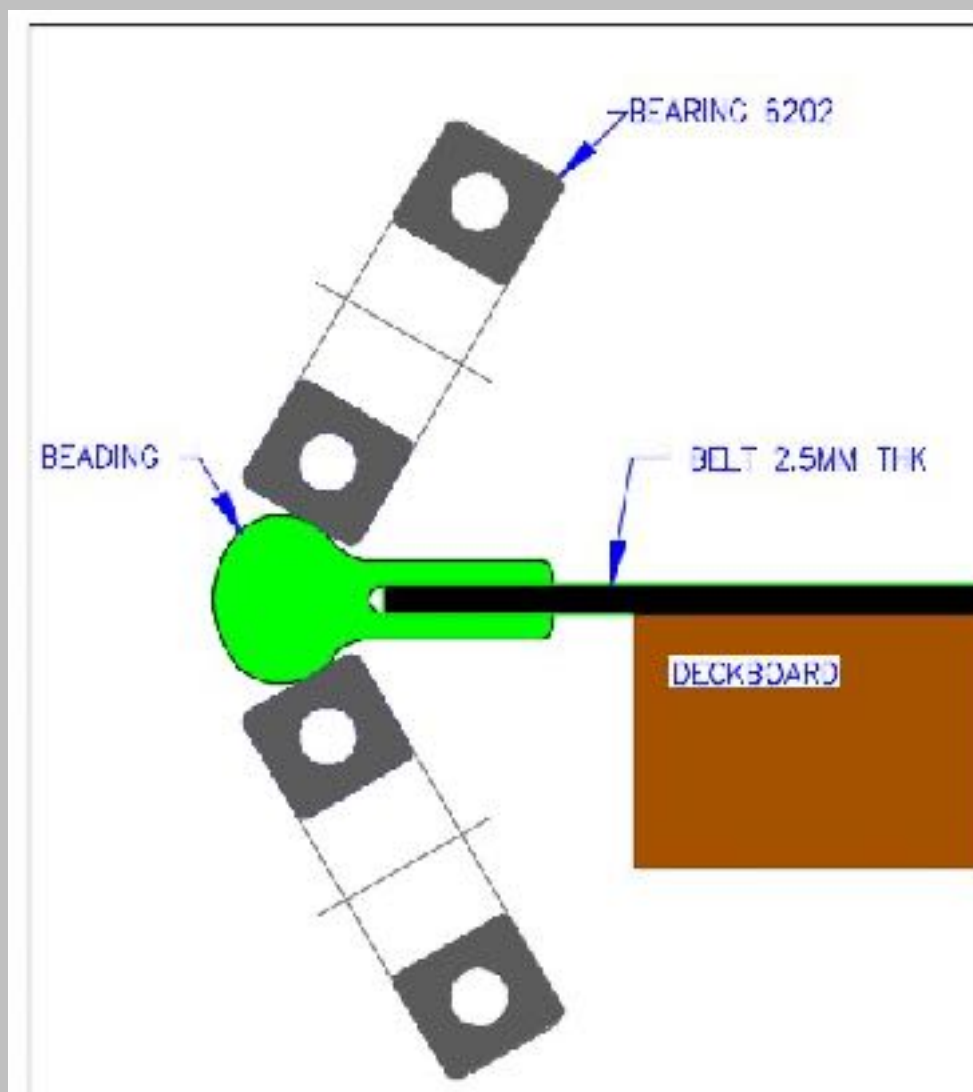


CBC | BELT BEADING TECHNOLOGY

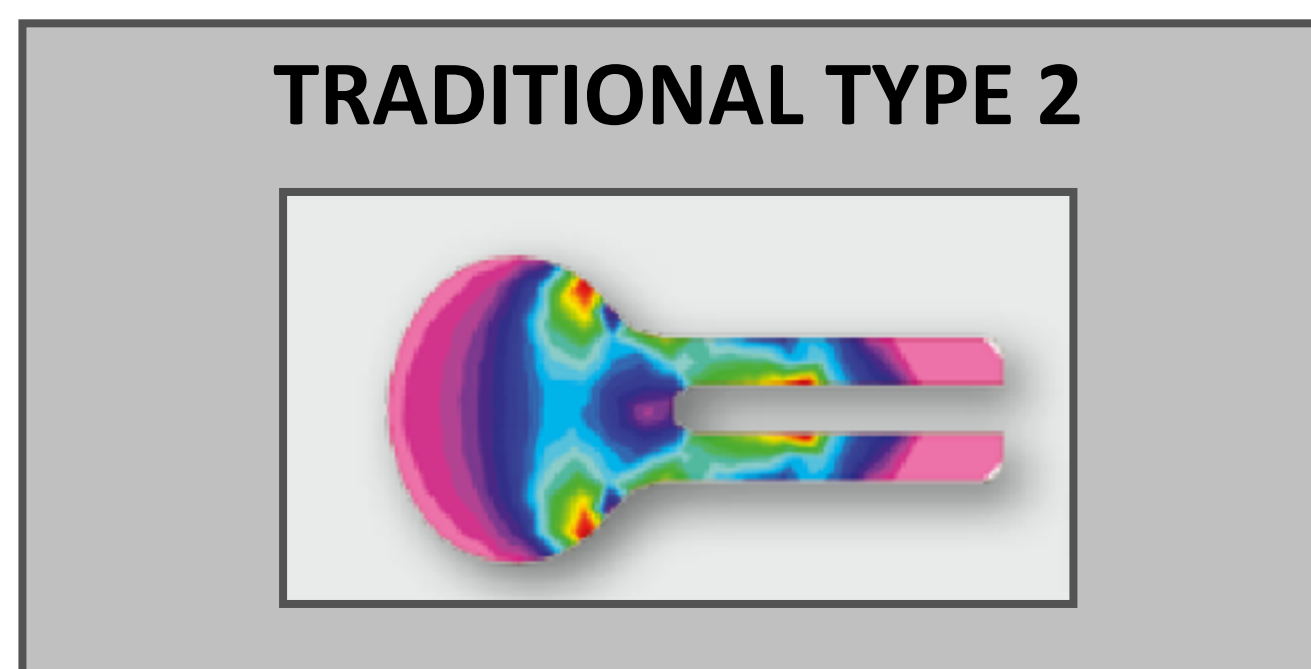
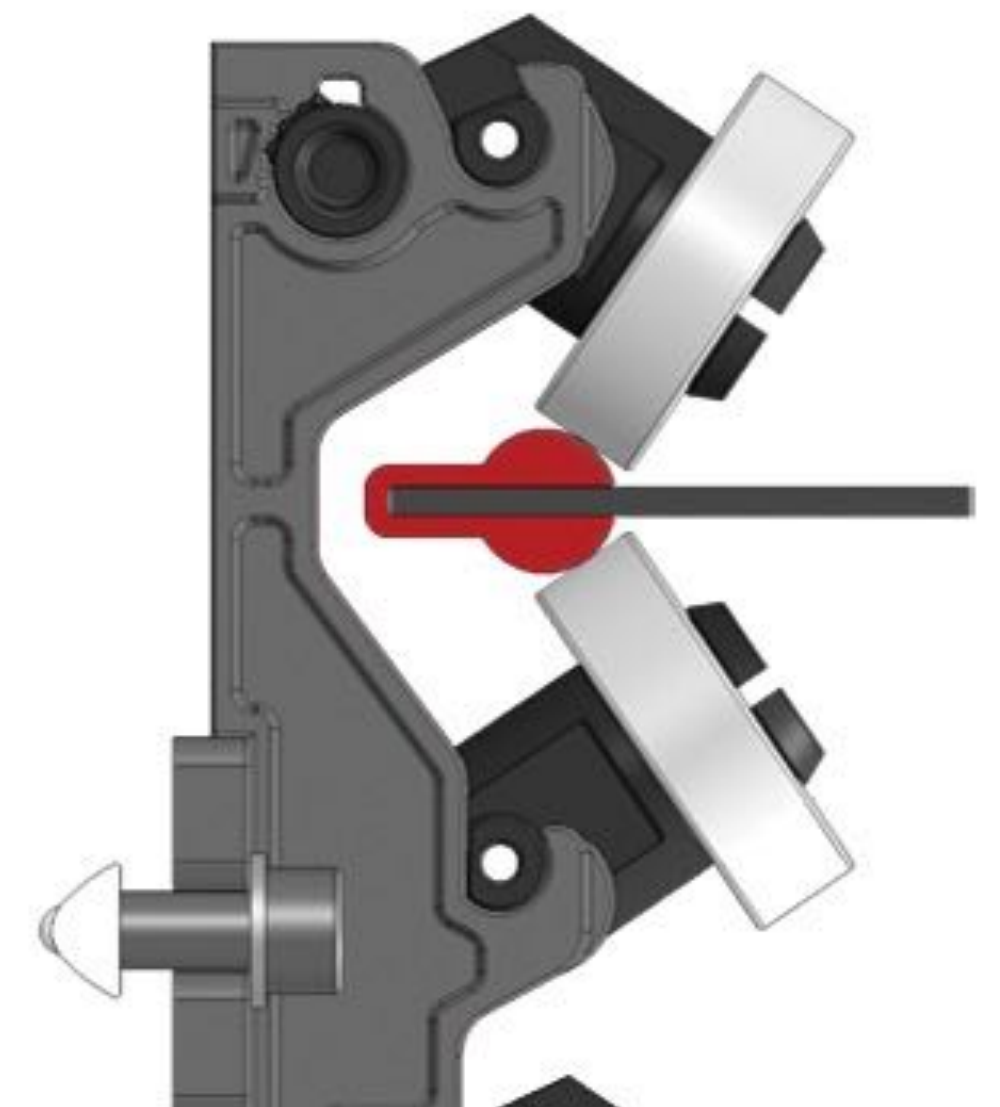
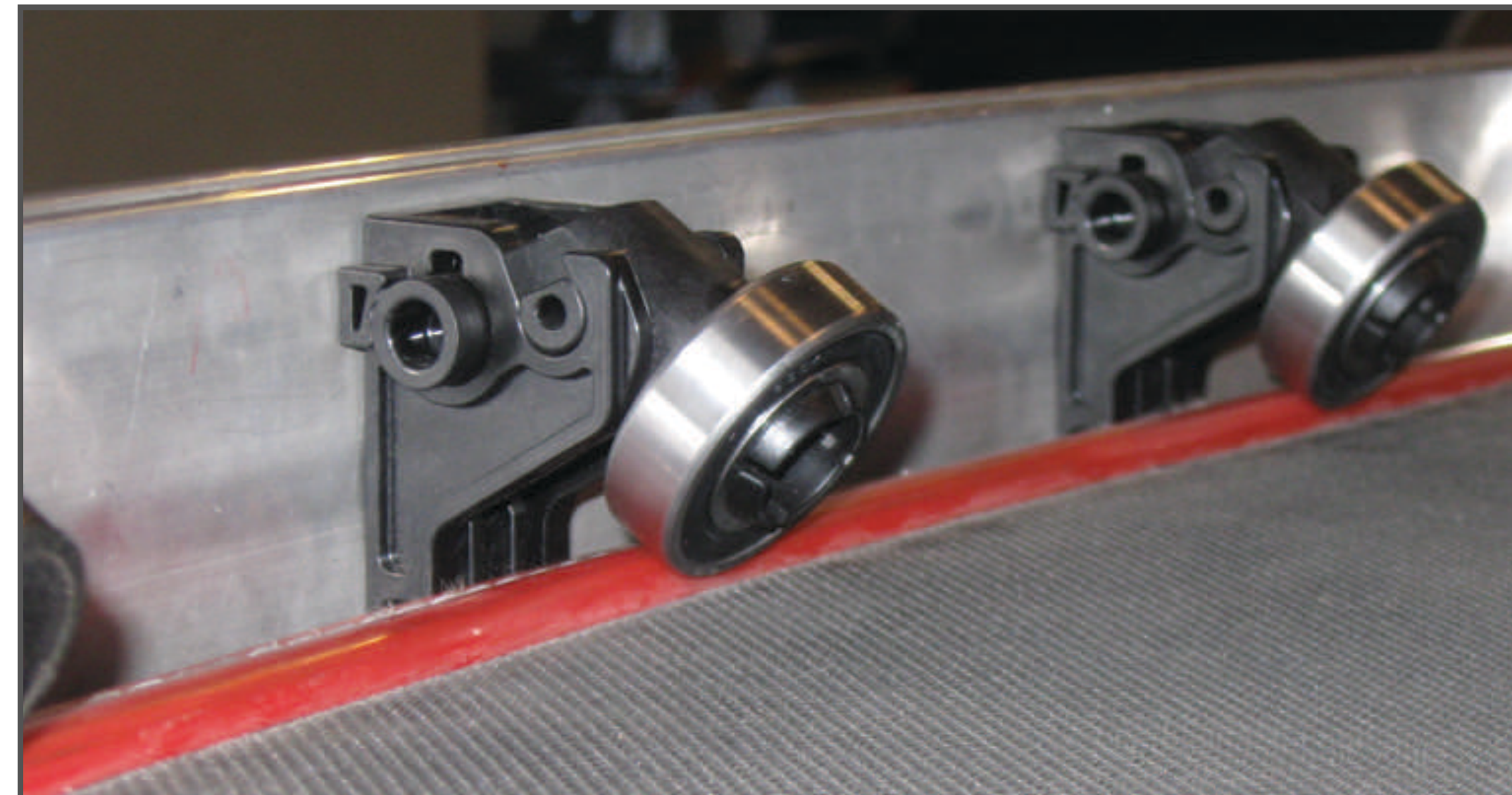
TRADITIONAL TYPE 1



TRADITIONAL TYPE 2



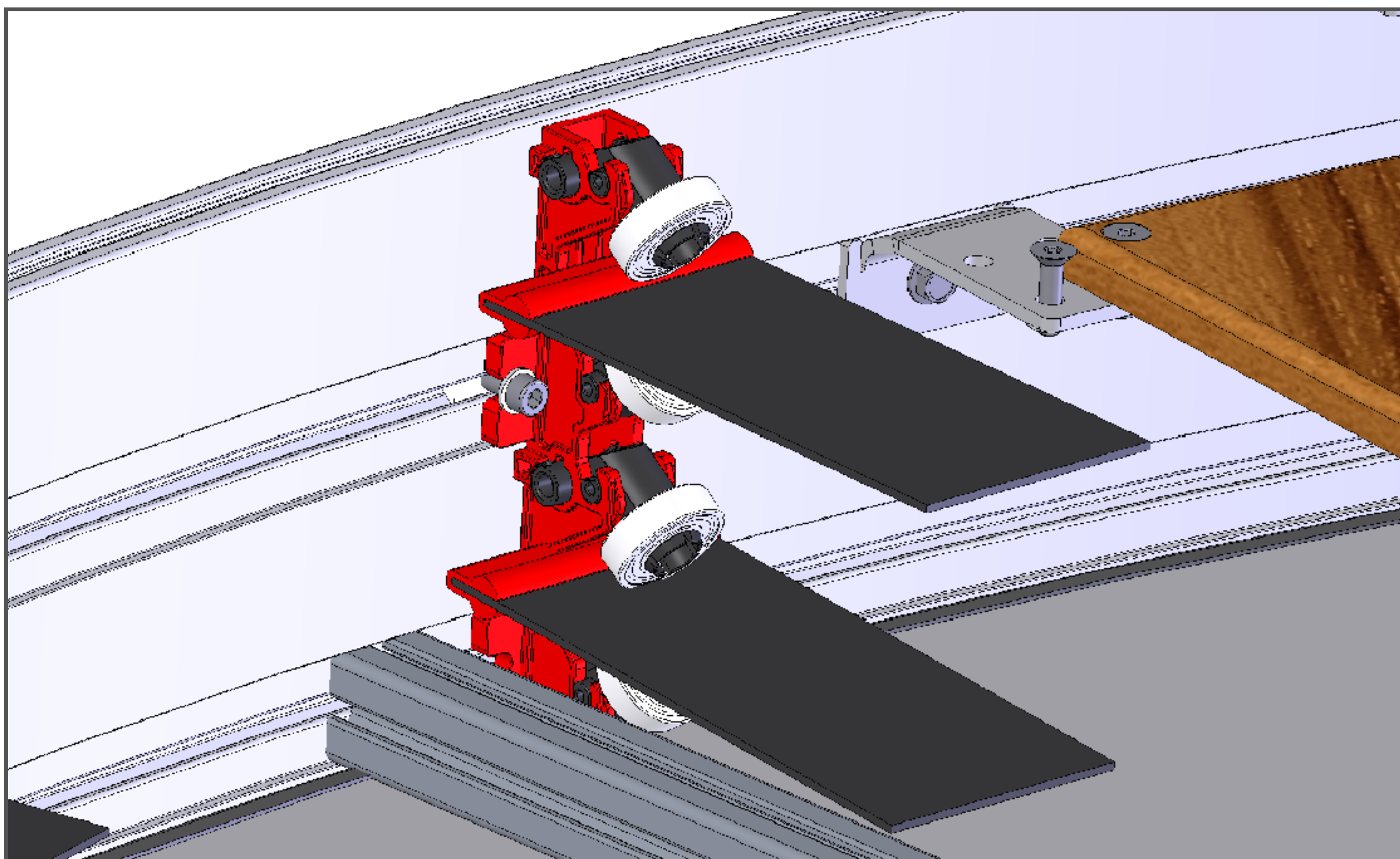
CBC | GUIDING TECHNOLOGY



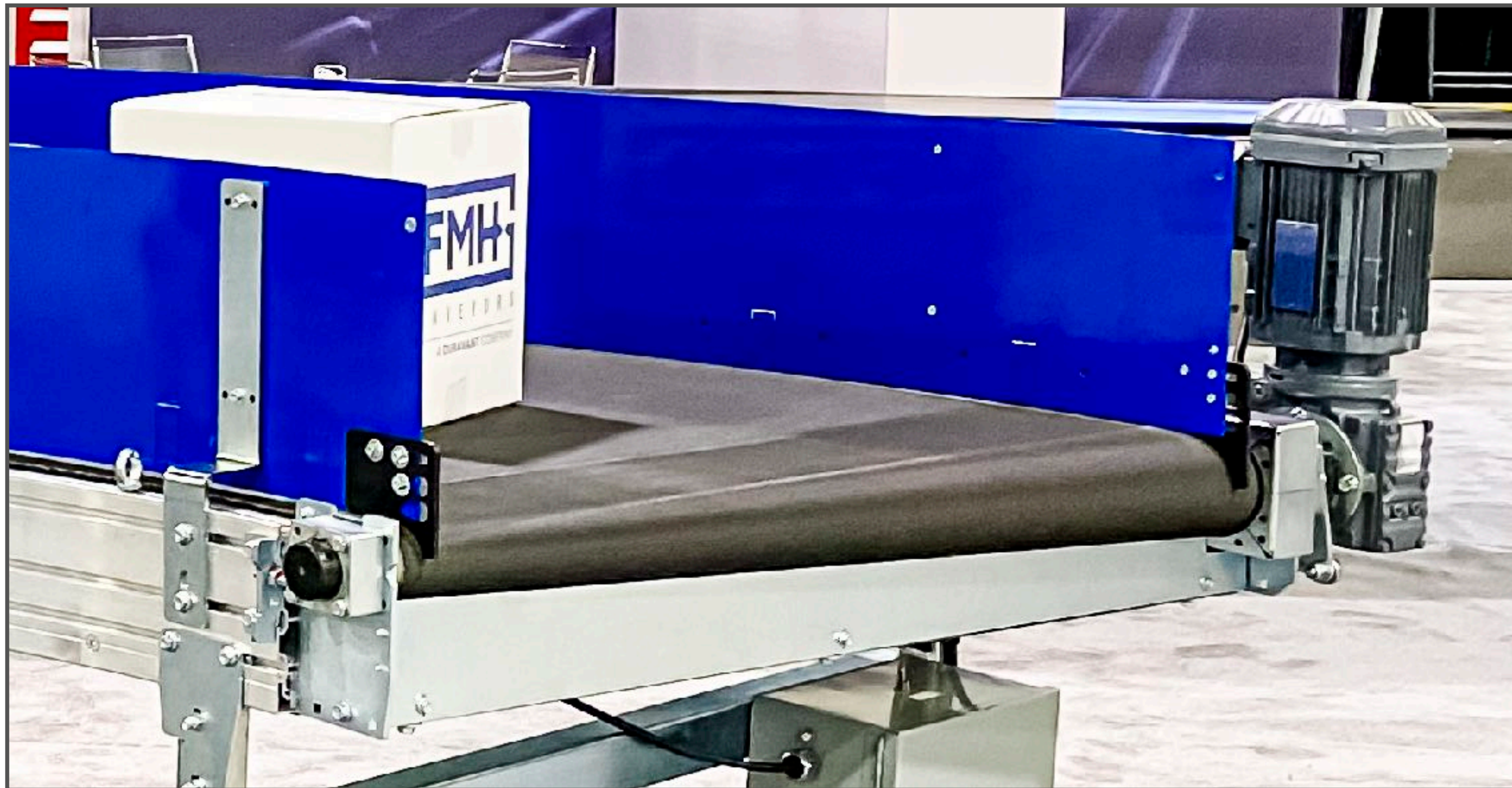
STRENGTH AT 10KG PER HOLDER

- Highly elastic guiding profile is securely bonded to belt
- Belt is guided on the outside radius of guiding profile
- Guiding profile is offset at the joints and secured with a double seam to eliminate breakage danger

CBC | GUIDING TECHNOLOGY



CBC | DRIVE SYSTEM



- Drive pulley with wear resistant friction lining
- Conical Pulleys
 - High power distribution / transmission over the entire belt width
 - High speed
 - Low maintenance reducing non-productive times
- Variable motor positions

CBC | BELT CHANGE



- This video has been sped up for this presentation.
- Normal playback speed only takes 8 minutes and 34 seconds.

CBC | ADVANTAGES



- Belt beading design is 5x stronger than traditional belt beading
- High reliability, virtually maintenance-free
- Roller belt guide system allows belt removal without fully dismantling
- Belt can be replaced in as little as 15 minutes
- Designed for a wide range of weight categories and product sizes
- Low noise level at high speeds

CBC | SPECIFICATIONS



| | |
|--------------------|---|
| NOMINAL WIDTH (NW) | Up to 59" |
| INNER RADIUS (IR) | Up to 78.74" |
| ANGLE | 30°, 45°, 60°, 90°, 180° |
| SPEED | Up to 9.19 ft/s (550 fpm+) |
| UNIT LOAD CAPACITY | 110-132 lbs |
| MAX. LOAD CAPACITY | Up to 485 lbs |
| DRIVE UNIT | 230 / 460 V - 60 Hz |
| BELT CONSTRUCTION | 2 Ply polyester fabric -- coating according to application |

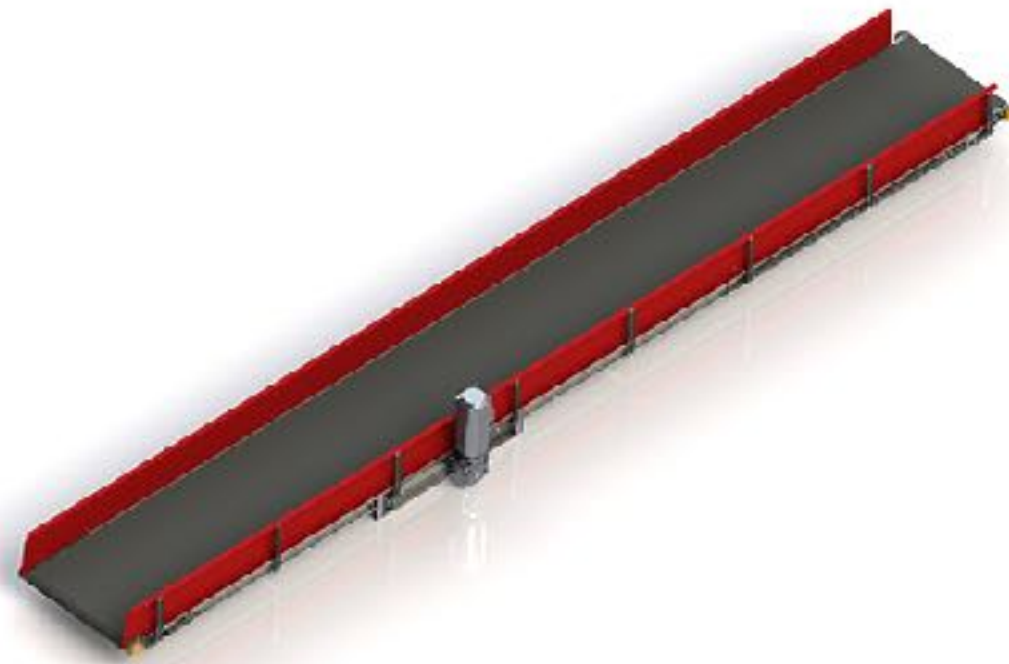
CBC | OPTIONS



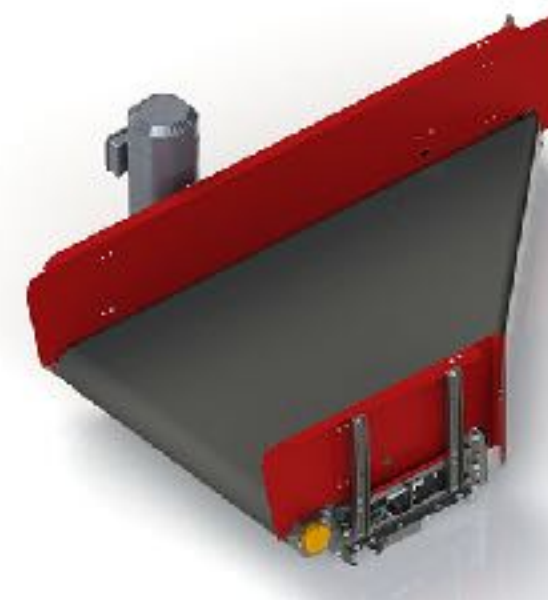
VFD ON MOTOR

- VFD Frequency control on drive unit
- Brake on drive unit
- Variable motor positions
- Variable support mounting options
- Variable side guide mounting options
- Photo-eye holders with variable mounting options
- Pop-out rollers

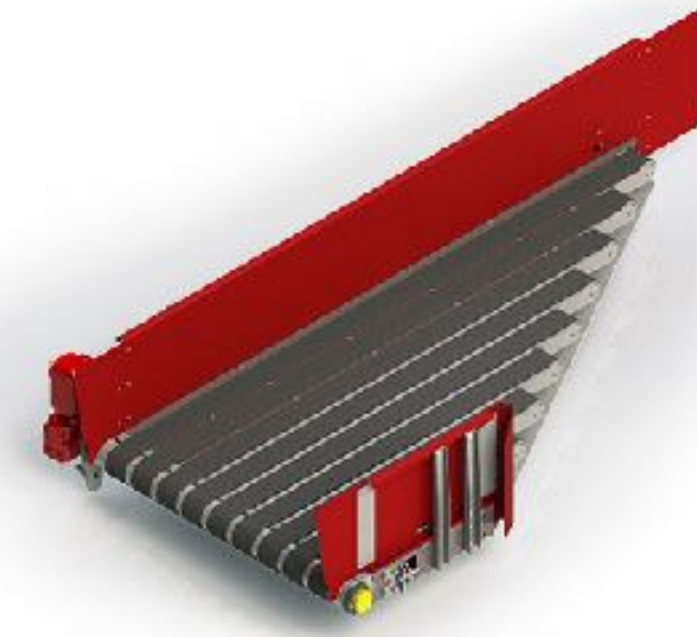
OTHER BELTED SOLUTIONS



STRAIGHT BELT CONVEYOR



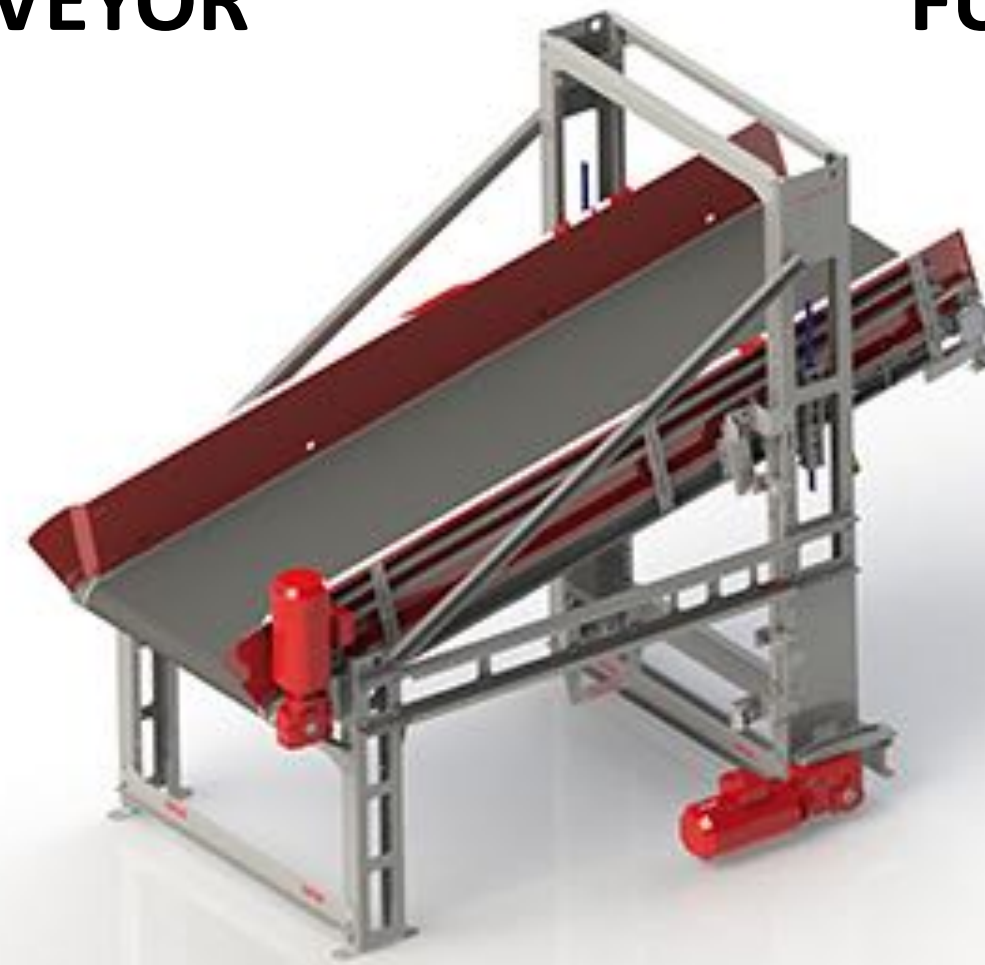
FULL BELT MERGE



STRIP BELT MERGE



S TRANSPORTING UNIT



VERTICAL SORTING UNIT

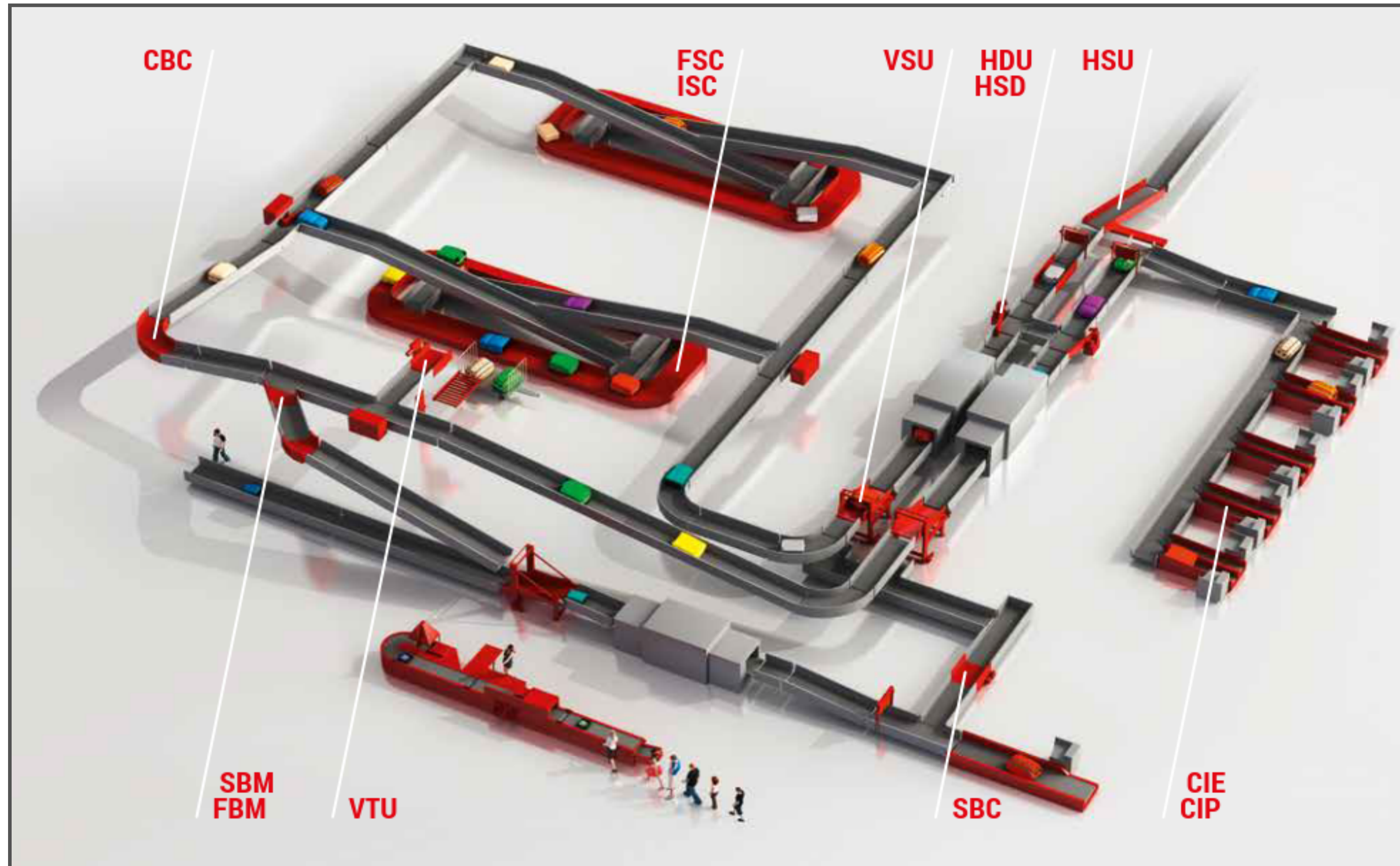


VERTICAL TRANSPORT UNIT



HIGH SPEED DIVERTER

AIRPORT APPLICATIONS



Extensive product portfolio includes a complete range of intelligent conveyor systems employed in an airport Baggage Handling System (BHS).

WORLD WIDE FOOTPRINT



WORLDWIDE PRESENCE

We have an industrial presence in 7 countries worldwide and an active customer base in over 42 countries.

- FMH HEADQUARTERS
- M06 HEADQUARTERS
- JOINT VENTURE
- AGENT

COMMITMENT TO QUALITY



Our commitment to quality is ensured by a number of systems, standards, practices and approvals:



ISO 9001

M06 manufacturing facilities are certified to the ISO 9001:2015 quality standard. This standard ensures that formalized business processes are implemented to guarantee efficiency, quality, and continuous improvement.



CE MARK

The design, material selection, process control and optimized production involved in the development of our products ensures a total quality performance that meets our customers' exacting needs.



BNP APPROVAL

M06 has been awarded a certificate of approval from BNP Associates, a leading worldwide provider of specialized consulting services on baggage handling and other systems to the global air transportation industry.



GATE MEMBERSHIP

Being a member of GATE (German Airport Technology & Equipment) means meeting the most stringent quality and performance requirements.

A blue-tinted photograph of a large industrial machine, likely a paper mill or textile loom. A wide, curved metal band or frame dominates the foreground and middle ground. In the background, various mechanical components, including gears, bolts, and structural supports, are visible. The overall scene is industrial and technical.

THANK YOU