



C O N V E Y O R S

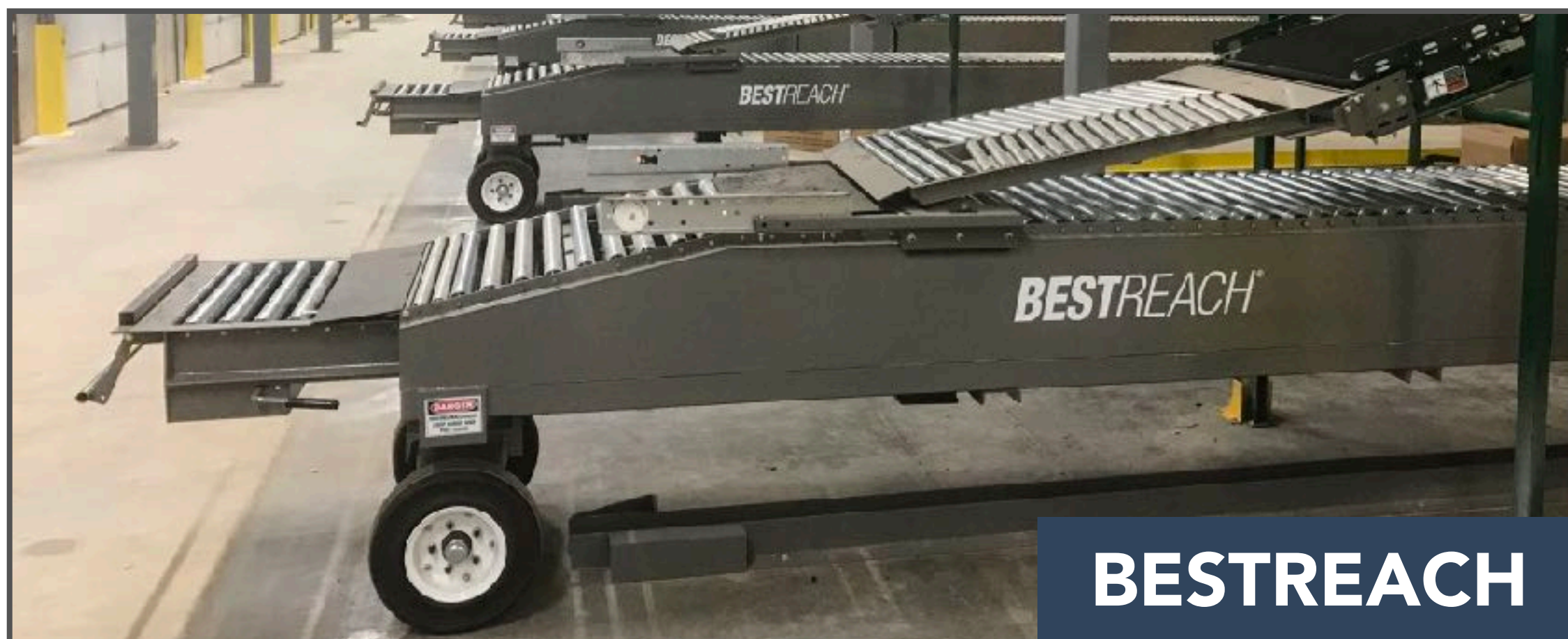
A DURAVANT COMPANY

# AFTERSORT

RIGID TWO STAGE TRUCK LOADER



# FMH TRADITIONAL TRUCK LOADERS





# AFTERSORT TL2 TRUCK LOADER





# BENEFITS | DESIGN

- Robust design can withstand impact from lift trucks
- Integrated guard rails reduce potential product damage
- Powered drive system improves employee ergonomics while moving the conveyor in / out of the trailer
- Two stage design reduces overall space required
- Proven reliability with over 3,000 units in the field



# BENEFITS | COST & EFFICIENCY



- Low initial investment cost
  - Between NestaFlex & BestFlex trailer loader pricing
- Lowest lifetime Cost of Ownership — 20+ Year lifespan with proper maintenance
- Low Maintenance Cost due to few moving parts & robust design
- Reduces load times & increase productivity by providing steady flow of boxes to operator





# BENEFITS | MULTIPLE SOLUTIONS



**MAXXREACH FOR TRUCK UNLOADING**



**AFTERSORT FOR TRUCK LOADING**



# SEGMENT APPLICATIONS



**E-COMMERCE**



**PARCEL**



**THIRD PARTY LOGISTICS**



**FOOD & DISTRIBUTION**



**RETAIL DISTRIBUTION**

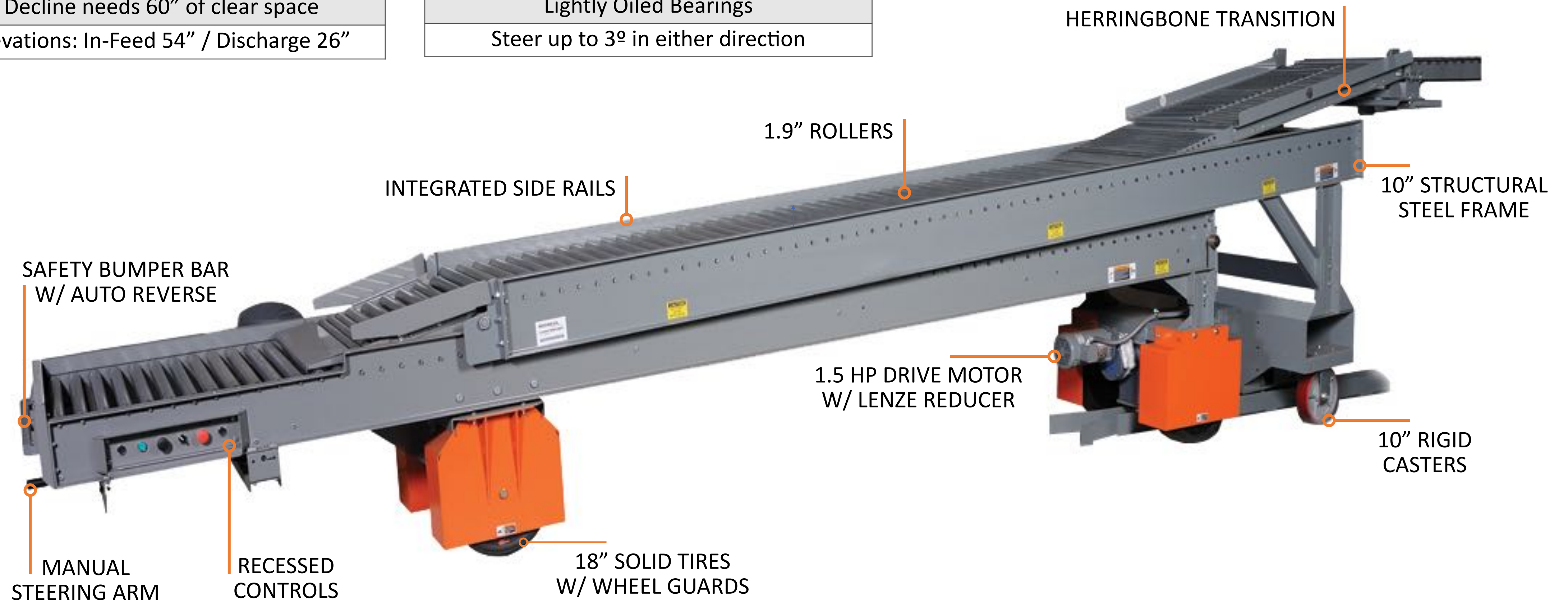


# TL2 | DESIGN



Two Piece Telescoping Design
Powered in & out at 45 fpm
Decline needs 60" of clear space
Elevations: In-Feed 54" / Discharge 26"

16 Gauge Galvanized Steel Rollers
3" Roller Centers
Lightly Oiled Bearings
Steer up to 3° in either direction



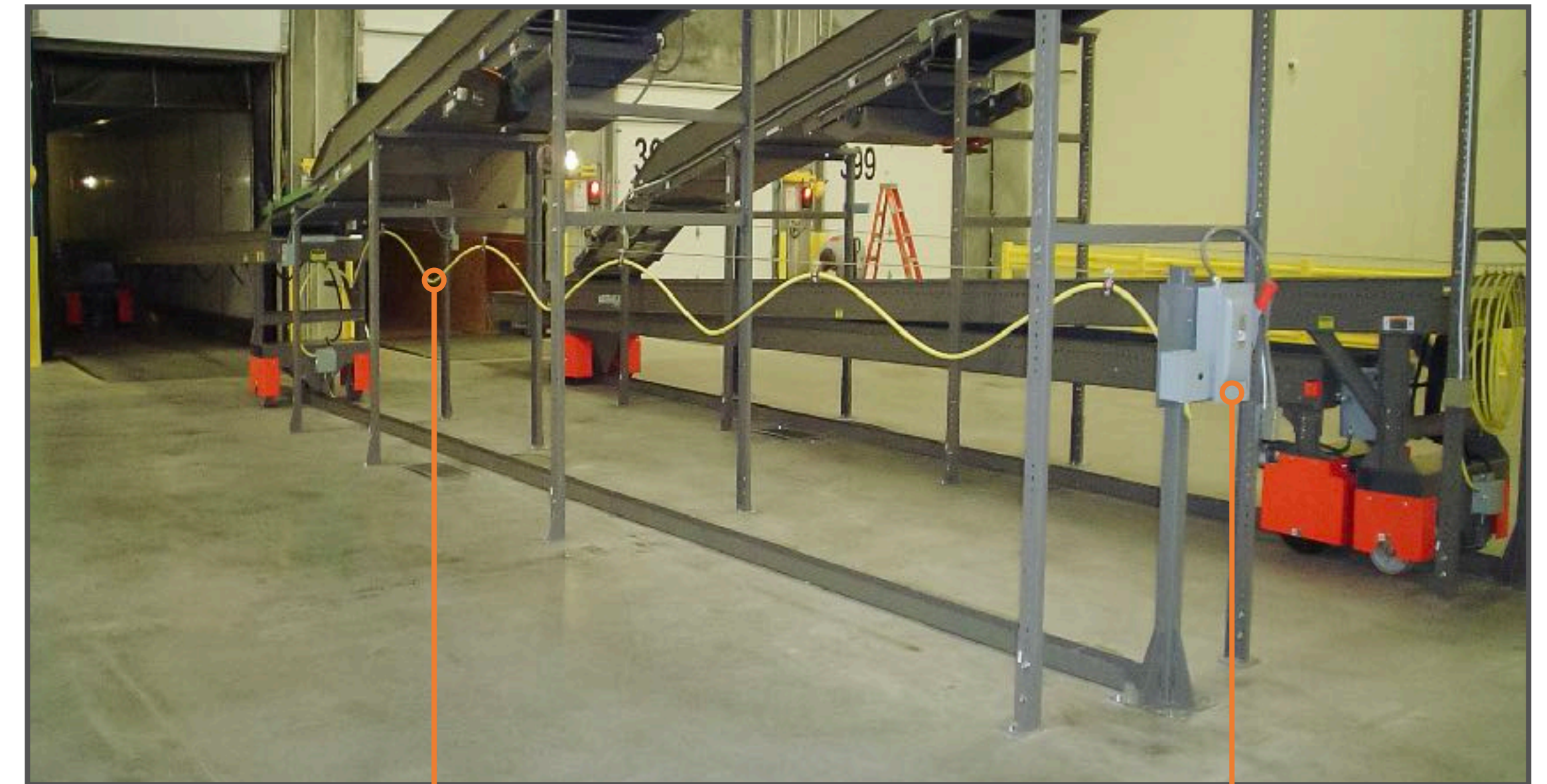


# TL2 | FESTOON & GUIDE TRACK



FLOOR MOUNTED GUIDE  
TRACK WITH GUIDE WHEEL

480VAC POWER SUPPLY & INTERLOCK  
FESTOON CABLE STORED



POWER SUPPLY & INTERLOCK  
FESTOON CABLE EXTENDED

FUSED  
DISCONNECT



# TL2 | CONVEYOR ORIENTATION



**LEFT HAND CONVEYOR**

Controls are on the right side of conveyor while facing the trailer



**RIGHT HAND CONVEYOR**

Controls are on the left side of conveyor while facing the trailer



# TL2 | OPTIONAL FEATURES



- Herringbone Transition
- Light & Fan Kits
- 2" Roller Center
- ABEC Sealed Precision Bearings
- 230 VAC 3 Phase Power
- Fused Disconnect
- Operator Controls for upstream conveyors







QUESTIONS?



# TL2 | LENGTHS & WIDTHS



## COMMON LENGTHS

56' Consists of Two 28' Sections

60' Consists of Two 30' Sections

64' Consists of Two 32' Sections

## COMMON WIDTHS

Top - 32" Wide / Bottom - 28" Wide

Top - 35" Wide / Bottom - 31" Wide

Top - 37" Wide / Bottom - 33" Wide

When selecting the width to use you will need to know the maximum carton width that will be conveyed to ensure it will fit between the rails of the lower stage.

The upper section width usually matches the width of the feed conveyor as closely as possible.



# MODEL NUMBER BREAKDOWN



MODEL TL2303228	
TL2	Aftersort Model
30	Length of Each Section (This model is 60')
32	Width Between Frame in Upper Section
28	Width Between Frame in Lower Section



# DESIGN CONSIDERATIONS



- Products to be conveyed
- Size of Trailer being loaded
- Will there be any Palletized loads
  - Determine alignment of the conveyor to door
- Type of Dock Leveler being used
- Slope / Grade of Dock Area
- Required space between loader and dock door
- Storage space available
- 480 Power Availability



# GRAVITY OR BELT DECLINE FEED?





# PHOTO EYES



RUN UP PHOTO EYE

FULL LINE PHOTO EYE



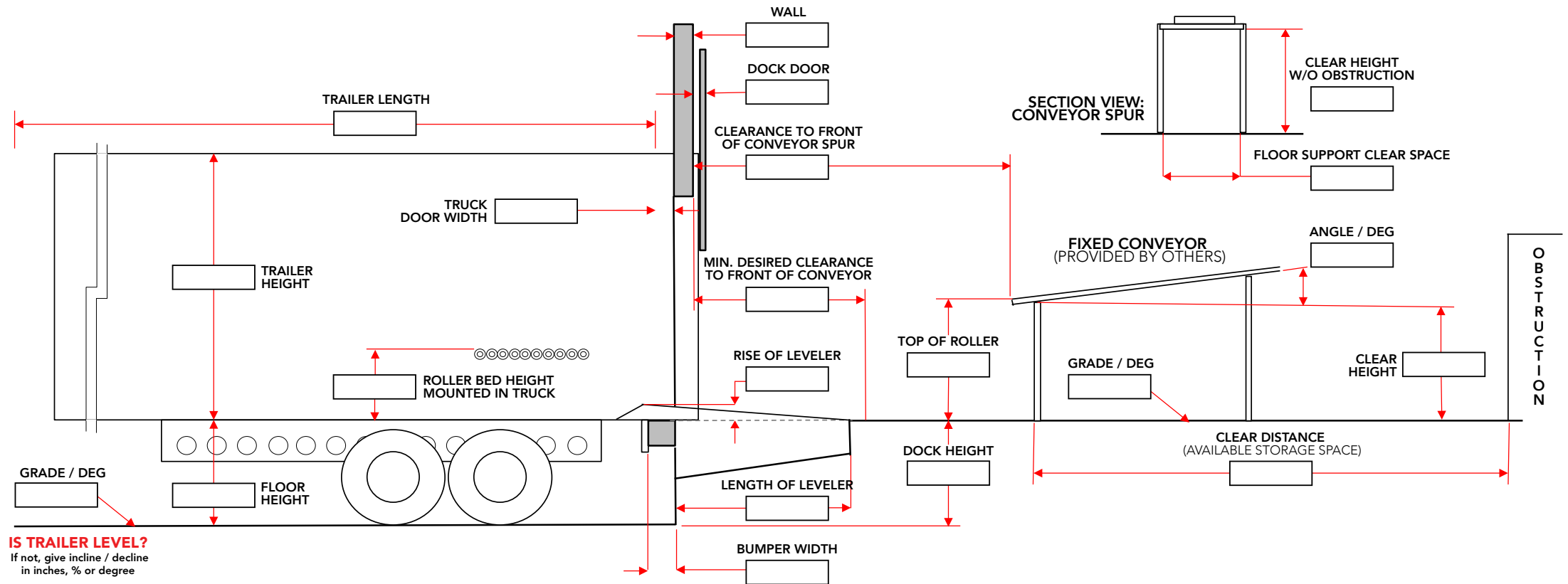


# INQUIRY FORMS



## DOCK INQUIRY FORM

COMPANY NAME	
COMPLETED BY	
COMPLETED DATE	
NOTES	



**IS TRAILER LEVEL?**  
If not, give incline / decline  
in inches, % or degree

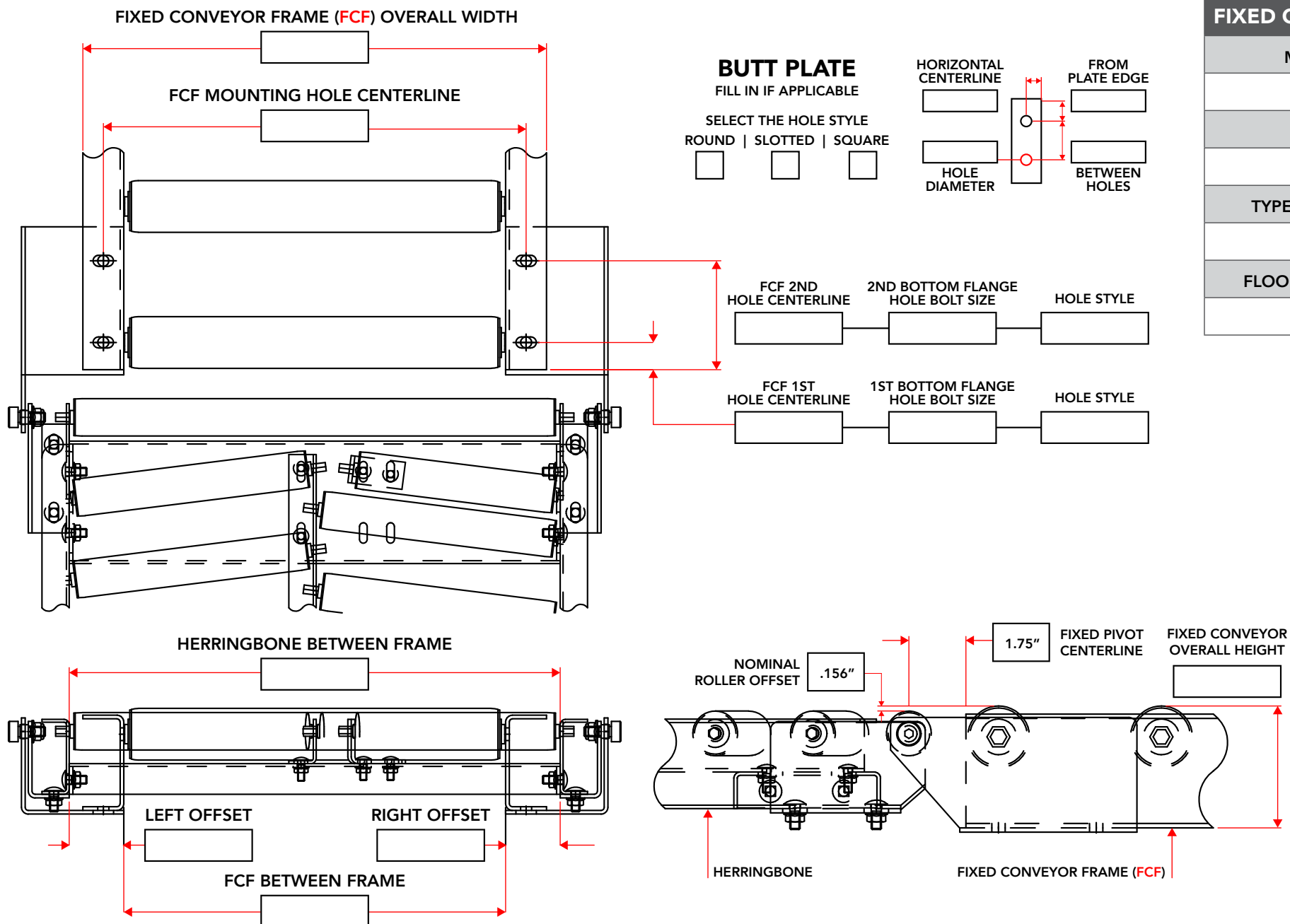
PRODUCT CONVEYED			ENVIRONMENT			ELECTRICAL		OPERATIONAL	
	MIN	MAX		MIN	MAX			CHECK ALL THAT APPLY	
PACKAGE WEIGHT			TEMPERATURE			SUPPLY VOLTAGE		UNLOADING (RECEIVING)	
PACKAGE LENGTH			HUMIDITY			CONTROL VOLTAGE	120 VAC	LOADING (SHIPPING)	
PACKAGE WIDTH			CHECK OR LIST ALL CONDITIONS CONVEYOR/S WILL BE EXPOSED TO:			INTERLOCK REQUIRED			
PACKAGE HEIGHT						OPTIONS			
BAG TYPES						CHECK OR LIST ALL DESIRED OPTIONS			
BOX TYPES				RAIN		FRONT LIGHTS		DOCK LEVELER	
TOTE TYPES				SNOW		STACK LIGHTS		EDGE OF DOCK	
DARK BLACK ITEMS			CHEMICALS		FAN		LIFT OUT PLATE		
ORIENTATION			OTHER		HERRINGBONE TRANSITION		FIXED CONVEYOR - POWER		
					PAINT COLOR		FIXED CONVEYOR - GRAVITY		

DOCK-20200630



## HERRINGBONE INQUIRY FORM

COMPANY NAME	
COMPLETED BY	
COMPLETED DATE	
NOTES	



FIXED CONVEYOR DETAILS	
MANUFACTURER	
MODEL #	
TYPE (GRAVITY / POWER)	
FLOOR TO TOP OF ROLLER	

HB-INQUIRY-20200630

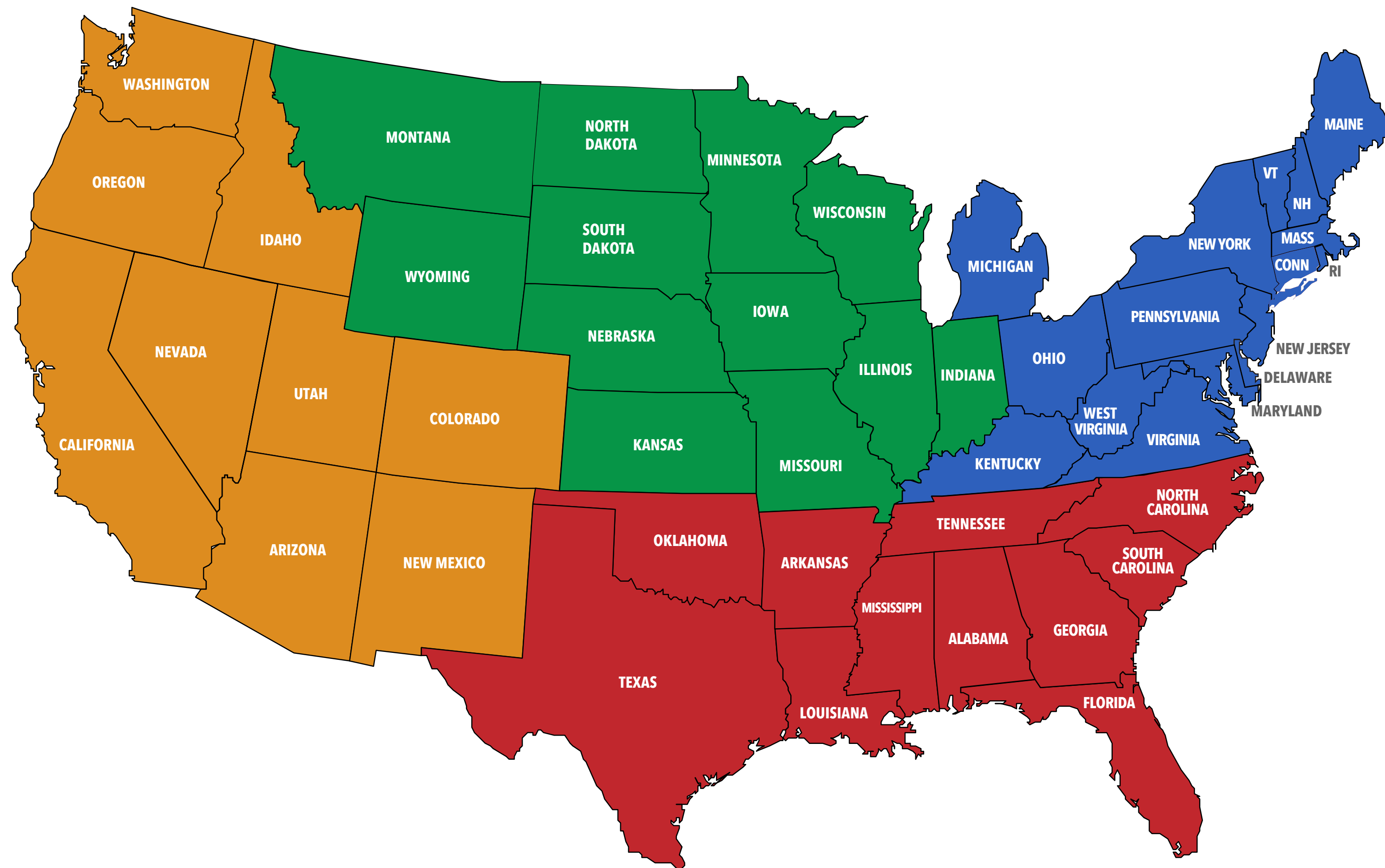




QUESTIONS?



# CONTACT OUR SALES TEAM



**CHARLIE WOOD**

NORTHEAST USA

CHARLIE.WOOD@FMHCONVEYORS.COM

**MACK BURCHAM**

SOUTHEAST USA

MACK.BURCHAM@FMHCONVEYORS.COM

**RICH STOKES**

CENTRAL USA

RICH.STOKES@FMHCONVEYORS.COM

**VICTOR ORTIZ**

WESTERN USA & LATIN AMERICA

VICTOR.ORTIZ@FMHCONVEYORS.COM





**THANK YOU  
FOR JOINING US**